



anchor industries



November, 2017

Anchor Industries Expands Acura/Honda Coverage

Anchor Industries, a respected manufacturer in the automotive aftermarket since 1933, continues to lead the market in late model coverage. We remain vigilant in our commitment to be the industry leader for all makes and models, including, domestic, Asian and European applications.

This month we focus on **14 new late model Acura and Honda numbers** that have been recently added. These numbers fit many of the most popular vehicles on the road today, accounting for **over 14,347,640 applications**. (based on Polk data)

Make sure you're not missing out on these growing sales opportunities.

NEW POPULAR ACURA / HONDA APPLICATIONS INCLUDE

Anchor No.	Make	Model	Years	Location
9803	Honda	Odyssey, 3.5L	2008-2010	Engine
9840	Honda	CR-V, 2.4L	2012-2016	Engine
9841	Acura Honda	ILX, 2.4L Civic, 2.4L	2015-2015	Engine
9844	Honda	Pilot, 3.5L	2009-2015	Engine
9845	Honda	Pilot, 3.5L	2009-2015	Engine
9863	Honda	Fit, HR-V, 1.5L, 1.8L	2014-2015	Torque Strut
9874	Acura Honda	TLX, 2.4L Accord, 2.4L	2013-2016	Transmission
9879	Honda	CR-V, Element, 2.4L	2001-2011	Rear Transfer Case
9881	Honda	Civic, 1.8L	2012-2015	Engine
9897	Honda	Accord, 2.0L, 2.4L	2016-2017	Engine
9898	Acura Honda	TSX Accord	2003-2014	Suspension Mount
9899	Acura Honda	TSX Accord	2003-2014	Suspension Mount
9900	Acura	ILX, 2.0L	2013-2015	Transmission
9901	Honda	Civic, 1.8L	2012-2015	Transmission



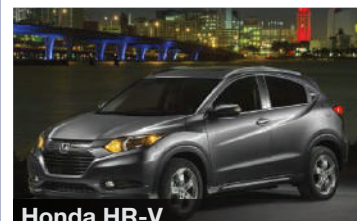
Honda Accord



Honda Civic



Honda CR-V



Honda HR-V



Honda Pilot

All new number application data is also available electronically in both Activant and Wrenchhead/WHI Solutions. For more details on all these applications along with our complete program availability, please contact your local Sales Representative or call our **Customer Service Department direct at: 800.444.4616.**

The Most Trusted Name In Engine & Transmission Mounts Since 1933!

