



anchor industries



March, 2017

Anchor Industries Expands Chevrolet Late Model Coverage

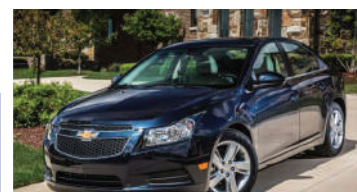
Anchor Industries, a respected manufacturer in the automotive aftermarket since 1933, continues to lead the market in late model coverage. We remain vigilant in our commitment to be the industry leader for all makes and models, including, domestic, Asian and European applications.

This month we focus on **12 new late model Chevrolet numbers** that have been recently added. These numbers fit many of the most popular Chevrolet vehicles on the road today, accounting for **over 6,763,480 applications**. (based on Polk data)

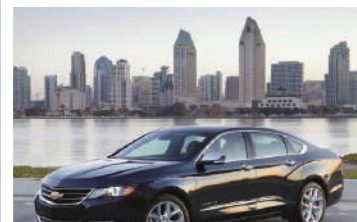
Make sure you're not missing out on these growing sales opportunities.



Chevrolet Camaro



Chevrolet Cruze



Chevrolet Impala



Chevrolet Silverado



Chevrolet Volt

NEW LATE MODEL CHEVROLET APPLICATIONS INCLUDE

Anchor No.	Make	Model	Years	Location
3264	Chevrolet	Silverado 2500, 3500, 6.6L	2011-2014	Transmission
3265	Chevrolet	Cruze, 1.4I, 1.8L	2011-2014	Transmission
3269	Chevrolet	Captiva, Equinox, Terrain, 2.4L, 3.0L, 3.6L	2010-2015	Transmission
3271	Chevrolet	Impala, 3.6L	2012-2015	Engine
3272	Chevrolet	Impala, 3.6L	2012-2015	Engine
3278	Chevrolet	Silverado 2500, 3500, 6.0L	2011-2015	Transmission
3281	Chevrolet	Impala, 3.6L	2012-2015	Torque Strut
3282	Chevrolet	Impala, 3.6L	2012-2015	Transmission
3290	Chevrolet	Silverado, 2500HD, 3500HD, 6.6L	2011-2015	Engine
3295	Chevrolet	Camaro, 3.6L, 6.2L, 7.0L	2010-2015	Engine
3303	Chevrolet	Impala, Malibu, 2.0L, 3.0L, 3.6L	2010-2016	Transmission
3346	Chevrolet	Volt, 1.4L	2014-2016	Torque Strut

All new number application data is also available electronically in both Activant and Wrenchhead/WHI Solutions. For more details on all these applications along with our complete program availability, please contact your local Sales Representative or call our **Customer Service Department direct at: 800.444.4616.**

The Most Trusted Name In Engine & Transmission Mounts Since 1933!

