



# ANCHOR HAS MORE

**MORE** Availability • **MORE** Coverage • **MORE** Experience

Anchor has continued to keep customers up to date with late model coverage otherwise unavailable in the aftermarket. In 2021, we introduced 101 new numbers that account for over 28 million total vehicle applications which represent significant sales opportunities. *(Source: IHS/Polk Data)*

# 2021

YEAR IN REVIEW

101 NEW NUMBERS INTRODUCED

**60** NEW NUMBERS

**IMPORT MOUNTS**

Acura, BMW, Honda, Hyundai, Kia, Lexus, Mercedes Benz, Nissan, Toyota, and Volvo

COVERING 12,268,522 VEHICLE APPLICATIONS



**34** NEW NUMBERS

**DOMESTIC MOUNTS**

Chrysler, Ford, and GM

COVERING 10,387,627 VEHICLE APPLICATIONS

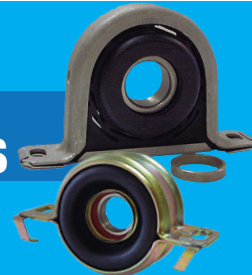


**7** NEW NUMBERS

**CENTER SUPPORTS**

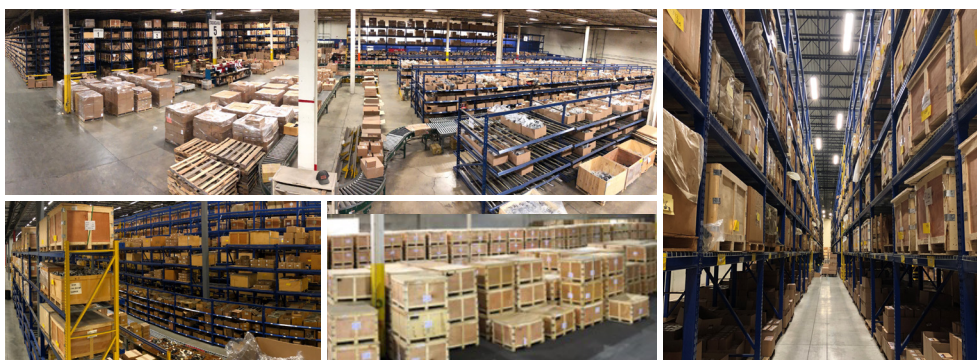
Ford, and GM

COVERING 5,437,033 VEHICLE APPLICATIONS



## ADDRESSING INDUSTRY CHALLENGES

During one of the most challenging supply environments in history, Anchor has remained focused on providing customers with a high level of service. With over 3,000,000 units of domestic inventory, our focus remains on providing customers with high order fill rates and timely delivery.



AVAILABILITY HAS NO SUBSTITUTE.

For more details on our complete program availability, please contact your local sales representative or call our customer service department at the number below.

**anchor industries, incorporated**

[anchor-online.com](http://anchor-online.com)

800.444.4616

